

## C01A. Candela Terminals configuration on LAN

This documents explains the steps which are required if we want to connect computers or terminals to Candela on a local area network (LAN). First we need to do some configurations on Candela server (this is the computer on which Candela is already running). Then, we need to install and configure Candela on terminals. All these Candela-terminals run Candela by connecting to a central database on the Candela-server.

### Following Steps should be performed on Candela-Server

Step 1A: Register new client on server

For every new client/pos we need to register client system on server.



Run Candela on the Server and Go to **Utilities > Setup & Configuration > Register New Client**

Open up the above Menu Item and following screen will be appear:



Enter computer name of Terminal system in “**Name**” text box and give any three digit code in the “**Code**” text box. There is a check box “**Non payment till**”. If this terminal is to be used as Non payment Till then this check box should be checked. All terminals which are marked as Non-Payment-Till are not allowed to open Payment Tills (or sales/returns screen).

Now you need to off firewall on server system.

Step 1B: Switch off the firewall on the Candela Server

This step has to be done only once (during configuration of the first terminal machine)

For window Xp.

Go > Start > Control panel > Firewall



For windows 7

Control Panel > All Control Panel Items > Windows Firewall



### Step 1C: Windows network security settings on Candela Server

If appropriate network security settings are not done on window machines then applications cannot perform over the local area network. In this step will make configurations so that Candela Server machine is accessible to other computers connected on the LAN.

Go to “Start”----> Control Panel ---> Administrative Tools and run “Microsoft .NET Framework 2.0 Configuration” wizard



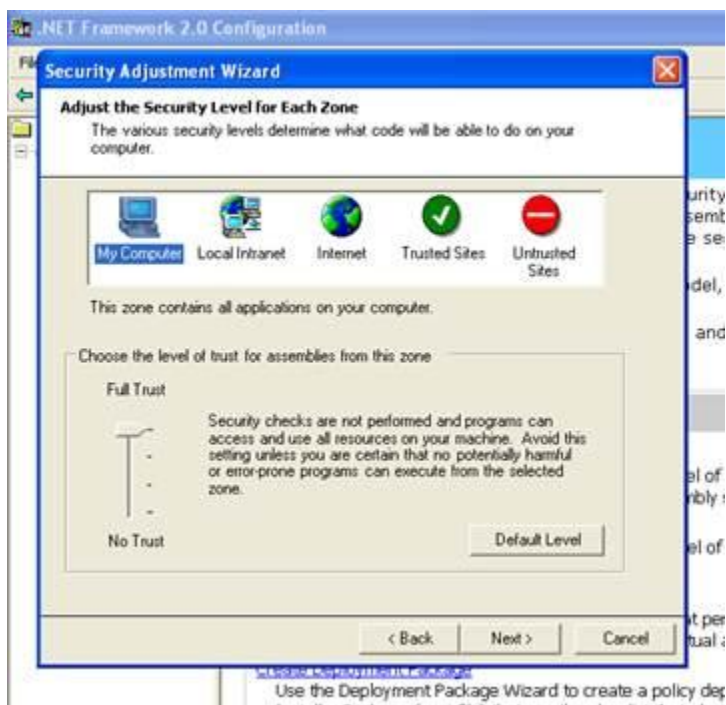
If you don't find "Microsoft .NET Framework 2.0 Configuration" wizard in administrative tools then you can download it from Microsoft website. This tool is also available in the "customer login" area on LumenSoft website.

### [LumenSoft Customer Login Area](#)

After installing above, "Microsoft .NET Framework 2.0 Configuration" wizard will appear in administrative tools.

Now open "Microsoft .NET Framework 2.0 Configuration" wizard and click "**Configure Code Access Security Policy**" and then click "**Adjust Zone Security**"

A wizard window will appear. Select "**Make changes to this computer**" and click next.



Select "**My Computer**" and set level "**Full Trust**" then select "Local Intranet" and set level "**No Trust**".

Click "**next**" and then "**Finish**" buttons

## Step 1D: SQL Server Configuration on the Server

This step has to be done only once (during configuration of the first terminal machine)

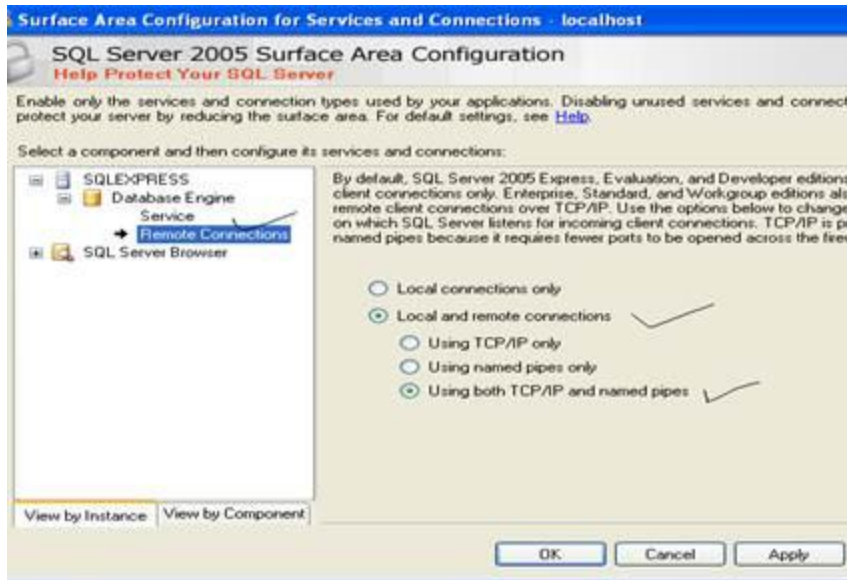
**Go > Start > All Programs > Microsoft SQL Server 2005 > Configuration Tools > SQL Server Surface Area Configuration.**

Click on SQL server surface area configuration then this window will be open



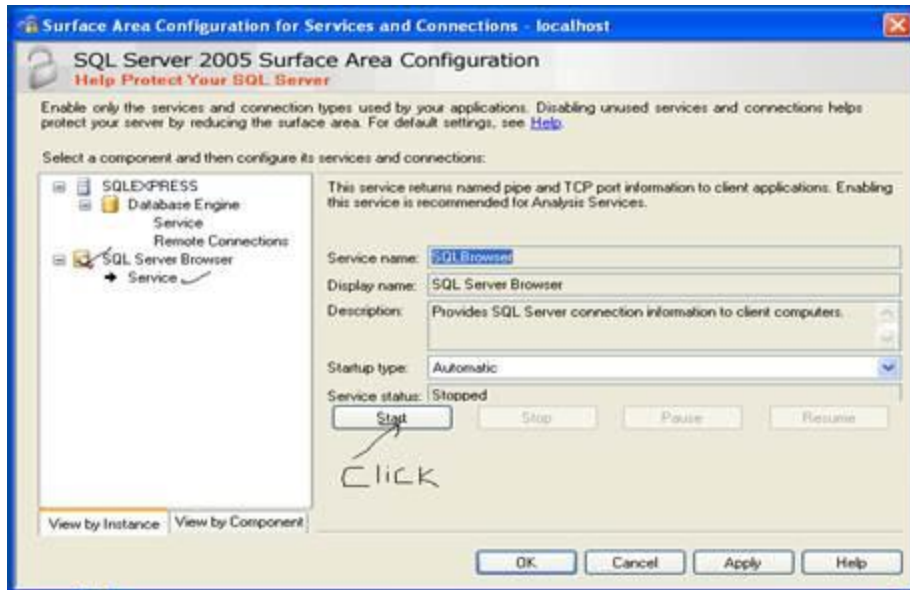
After you click Surface area configuration for service and connection

following screen will appear



1. Click on Database Engine > Service. On the right panel check for **“Startup Type”**. If *“startup type”* is *“automatic”* then press **“start”** button. Otherwise select *“startup type”* as *“automatic”* and press **“apply”** button and press **“start”** button and again press **“apply”** button
2. Click on Database Engine > Remote Connections. On the right panel **“Select Local and remote connections”** radio button. Within this option select the radio button *“Select Using both TCP/IP and named pipes”* radio button. Press **“apply”** button.
3. Click on Database Engine > Service. Press **“stop”** Button and then **“start”** button
4. Click on SQL Server browser > Service. On the right panel check for **“Startup Type”**. If *“startup type”* is *“automatic”* then press **“start”** button. Otherwise select *“startup type”* as *“automatic”* and press **“apply”** button and press **“start”** button and again press **“apply”** button





Following Steps should be performed on Candela-Terminal

### Step 2A: Installation of Candela on Terminal

For candela installation please see document “**C01.LumenSoft Candela RMS Installation Guide**”. Follow the same steps, as done while installing Candela server. However, in this case select “**install candela with no database**” option.

Once installation is done, then connect to the candela server computer and make a shortcut of “**Candela**” on the desktop of Candela Terminal.

Remember: If Candela is installed on more than one computer in the head office or at shop then all terminals should be connected to the server through a short cut from the EXE placed in the server.

**Note:** Different EXE files should not be placed on different computers because it will create chance of different versions on a customer premises. There is an exception to the above rule. Sometimes customers require different invoice printouts from different terminals. In this case we need to have different EXE files referring to the same database.

### Step 2B: Switch off the firewall on the Candela Server

If firewall on the terminal computer is on then Candela server may not be able to access the terminal. So we should switch off the firewall following the process given below:

For window Xp.

Go > Start > Control panel > Firewall



For windows 7

Control Panel > All Control Panel Items > Windows Firewall





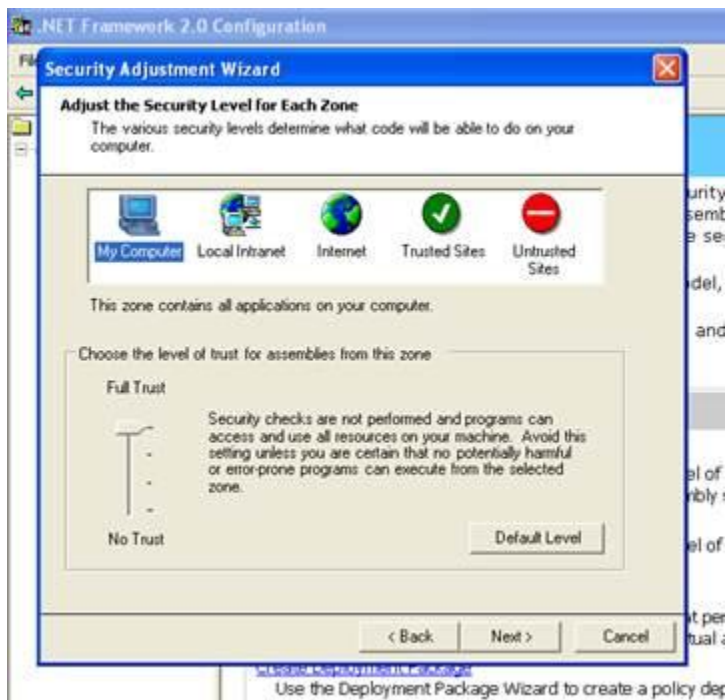
## Step 2C: Windows network security settings on Candela Terminal

If we run Candela shortcut from Terminal machine, it may give following error:



If systems are not correctly setup then connection cannot be built. So the following setting must be done before the terminals can work with the server through short cut.

Go to “Start”----> **Control Panel** ---> **Administrative Tools** and run “**Microsoft .NET Framework 2.0 Configuration**” wizard



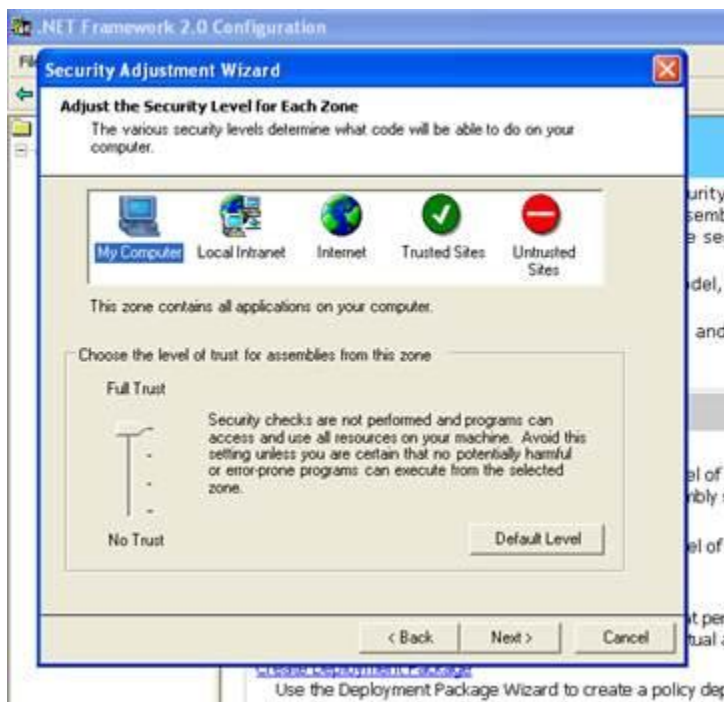
If you don't find "Microsoft .NET Framework 2.0 Configuration" wizard in administrative tools then you can download it from Microsoft website. This tool is also available in the "customer login" area on LumenSoft website.

[LumenSoft Customer Login Area](#)

After installing above, "Microsoft .NET Framework 2.0 Configuration" wizard will appear in administrative tools.

Now open "Microsoft .NET Framework 2.0 Configuration" wizard and click "**Configure Code Access Security Policy**" and then click "**Adjust Zone Security**"

A wizard window will appear. Select "Make changes to this computer" and click next.



Select "**My Computer**" and set level "**Full Trust**" then select "**Local Intranet**" and set level "**Full Trust**". Click next and Finish.