

C12. Candela Auto Replication and Backup Configuration

Introduction:

Candela provides facility to take automatic backup of database and also automatically transfer data (replicate) between shops and head-office. Backup utility is available on all Candela RMS versions while replication utility is available only for Enterprise version of Candela RMS.

Installation:

To use these features you have to install a separate setup called “CandelaServiceSetup”. This setup is available under the Candela Project.

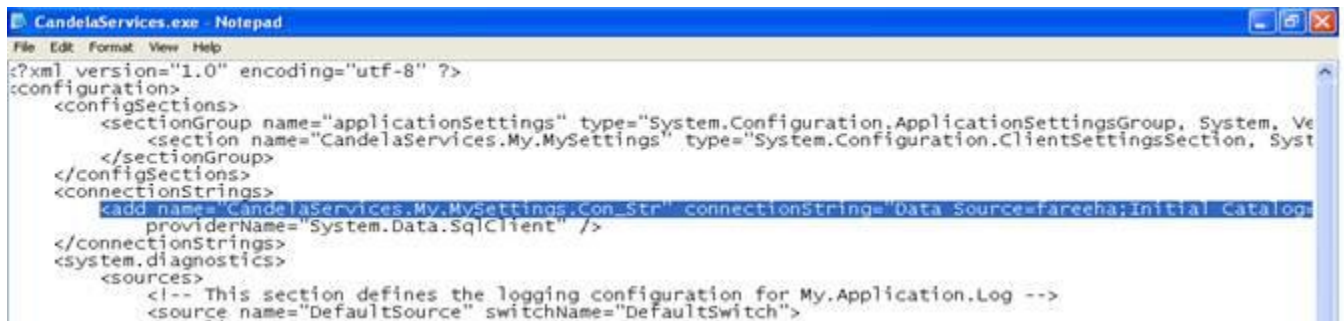
This setup has two files: **Setup.Exe** and **CandelaServiceSetup.msi**

For installation of these features, simply run the Setup.Exe file. You can install this project at any desired location. After successful Installation of Candela Scheduler Service, you have to change connection setting so that it can fetch desired information from Candela Database.

For that purpose, go to the path where service is installed, suppose you have installed Candela Scheduler Service at path `C:\Program Files\LumenSoft\CandelaSeviceSetup`

Go to that path and change file ‘CandelaServices.exe’ by opening that file in Notepad or any other editor and make connection string and My.MySettings according to database from which Candela RMS is connected.

Following screenshots indicate strings which are need to be changed.



```
<?xml version="1.0" encoding="utf-8" ?>
<configuration>
  <configSections>
    <sectionGroup name="applicationSettings" type="System.Configuration.ApplicationSettingsGroup, System. Ve
    <section name="CandelaServices.My.MySettings" type="System.Configuration.ClientSettingsSection, Syst
    </sectionGroup>
  </configSections>
  <connectionStrings>
    <add name="CandelaServices.My.MySettings.Con_Str" connectionString="Data Source=fareeha;Initial Catalog:
    providerName="System.Data.SqlClient" />
  </connectionStrings>
  <system.diagnostics>
    <sources>
      <!-- This section defines the logging configuration for My.Application.Log -->
      <source name="DefaultSource" switchName="DefaultSwitch">
```

There are four variables which should be changed and set to match Candela connection string: For example, the Candela database name is “Candela”, the computer name on which Candela is installed is “DBSERVER”, the SQL Server sa password is “LumenSoft”. Now the following variables in the connection string will be set:

Password is ‘Lumensoft0’

User ID is ‘sa’

Initial Catalog is 'Candela'

Data Source is 'DBSERVER'

Similarly there is **MrSettings** part of document should also be updated according to user's specification. Screenshot given below highlights the required part of document to be updated.

```
<applicationSettings>
  <CandelaServices.My.MySettings>
    <setting name="DbUser" serializeAs="String">
      <value>sa</value>
    </setting>
    <setting name="DbPassword" serializeAs="String">
      <value>lumensoft2003</value>
    </setting>
    <setting name="DbName" serializeAs="String">
      <value>candelablank</value>
    </setting>
    <setting name="ServerName" serializeAs="String">
      <value>rai\local</value>
    </setting>
  </CandelaServices.My.MySettings>
</applicationSettings>
```

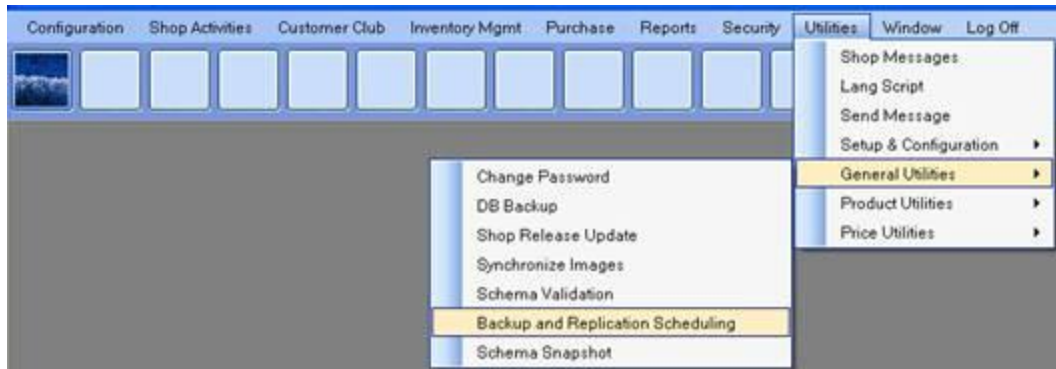
After updating the **MySettings** tag in document and making that according to connection string , document will look like as given below:

```
<applicationSettings>
  <CandelaServices.My.MySettings>
    <setting name="DbUser" serializeAs="String">
      <value>sa</value>
    </setting>
    <setting name="DbPassword" serializeAs="String">
      <value>Lumensoft0</value>
    </setting>
    <setting name="DbName" serializeAs="String">
      <value>Candela</value>
    </setting>
    <setting name="ServerName" serializeAs="String">
      <value>DBSERVER</value>
    </setting>
  </CandelaServices.My.MySettings>
</applicationSettings>
```

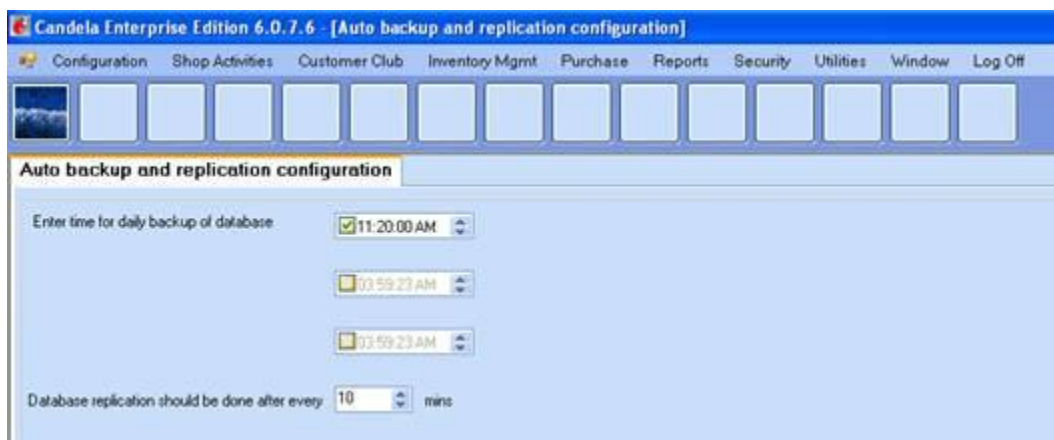
After changing the connection settings, reboot system. Once the reboot is done, installation process is complete.

Configuration:

After completing installation process, open Candela RMS and access Candela Scheduler Service screen from menu. Following screenshot illustrates the position of screen in Candela RMS menu.



Candela **Backup and Replication Configuration** screen will be displayed to user as given below:



There are three time boxes available on screen that is used to take automatic backup of candela. You can set daily time for automatic backup of database.

The database replication option is version based. It will only be enabled on Enterprise version of Candela RMS. On other versions, this box will be disabled. You can set minutes interval, after which there will be data transfer between Shop and Server (replicated).

After configuring these options, you will need to reboot you system and after rebooting, configuration process will be completed.