

## F04. Candela Barcode Thermal Printer Configuration

*Although this document refers to configuration of a specific thermal printer but most of the thermal printers are configured in the same way and this document can be used as guideline for configuration of similar thermal printers.*

**Printer:** Zebra TLP2844

**Paper size:** 50x25mm

To configure the printer with barcode please follow these steps

1. Install the Printer driver from **CD**

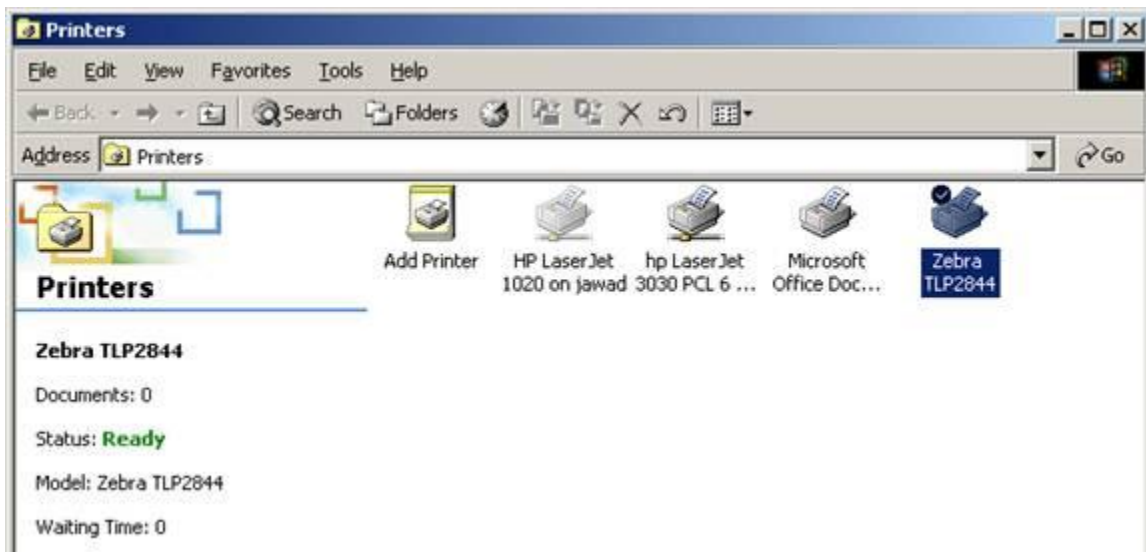


2. First select the model from the list **TLP2844** then click on **Windows Driver**

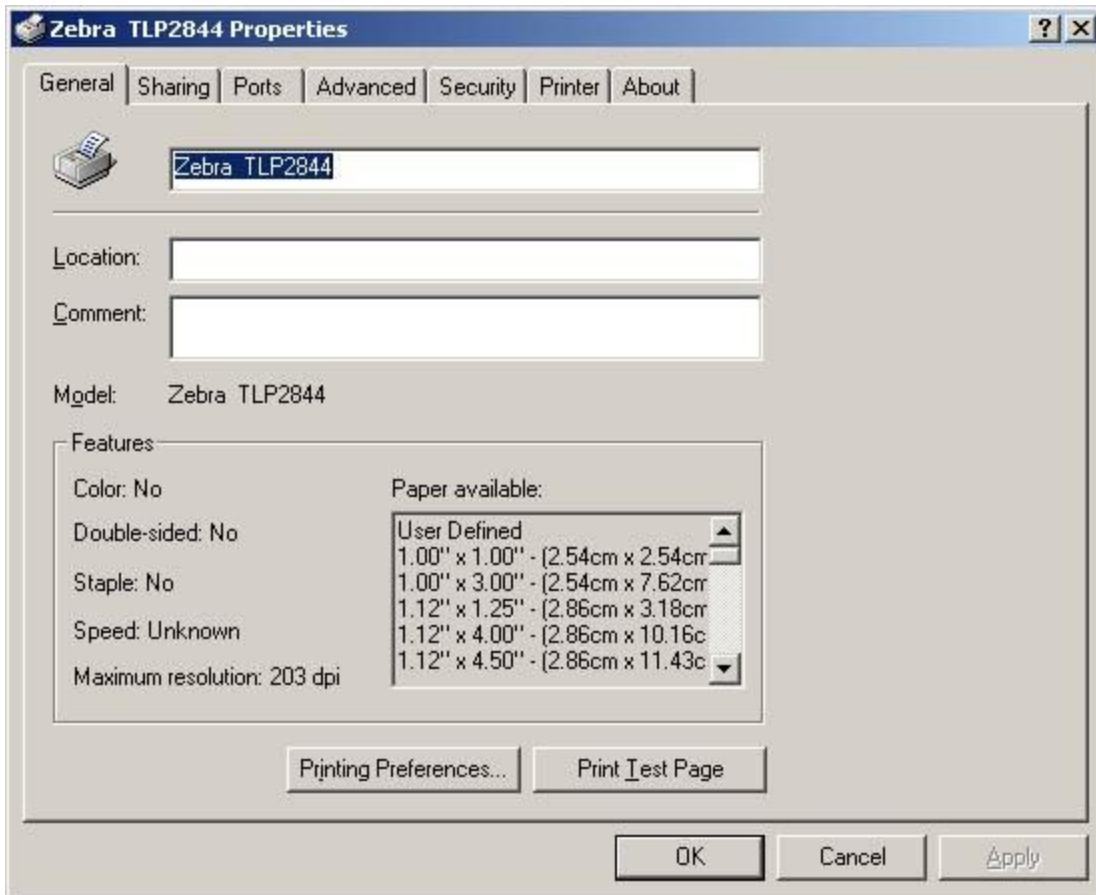








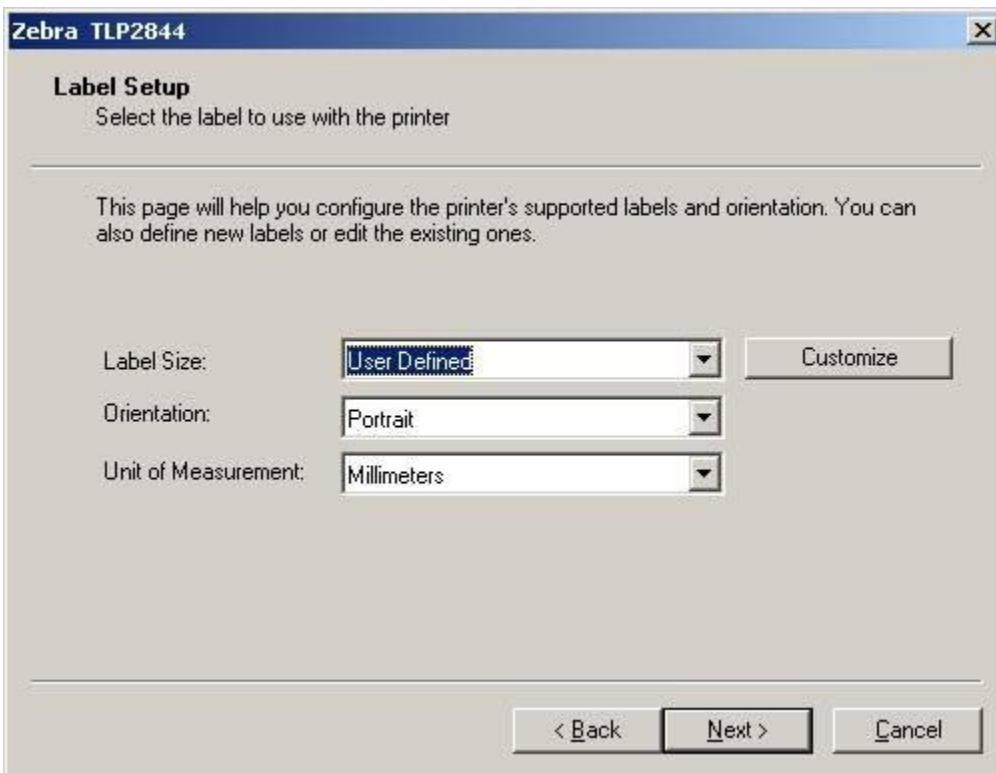
3. **Right click** on printer and select **Properties**



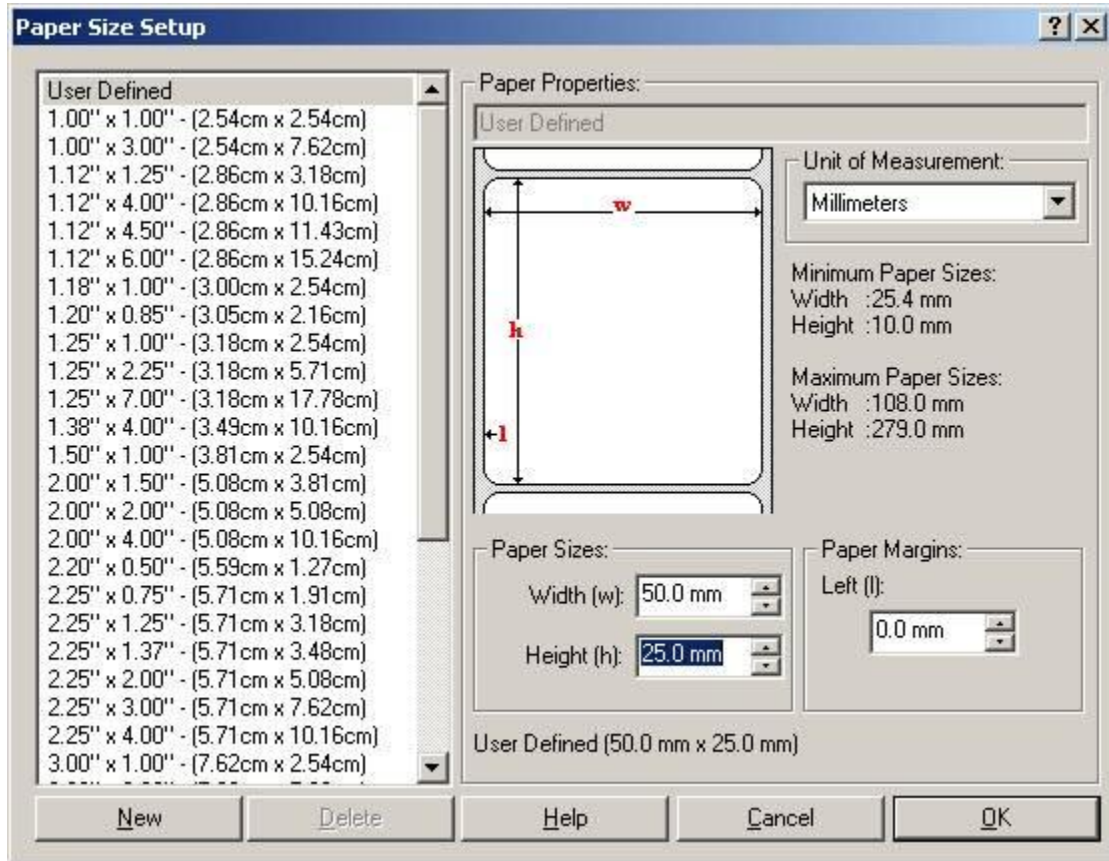
4. Click on **Printer Preferences**



5. Click on **Wizard Configuration Assistant**



- Click on **Customize**



- Enter the **Paper Size**:  
Enter the width and height of labels which you are going to print using this printer.

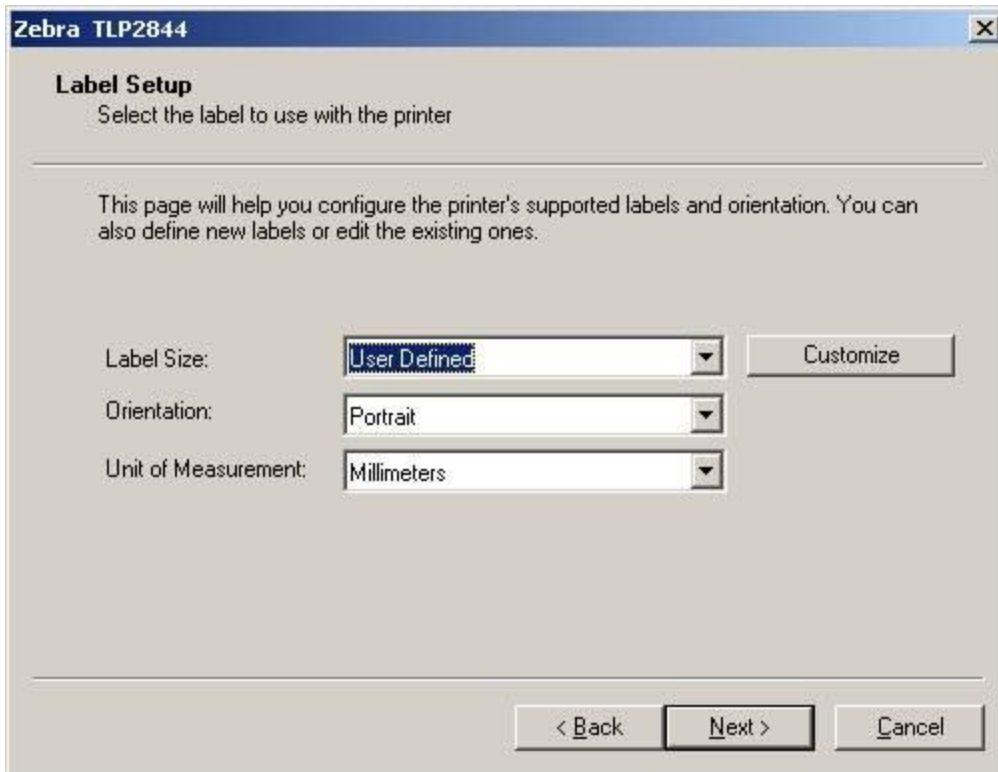
If there are two or three labels on the same roll then width should be given for total size of the paper. Then, according to paper size, if more than one labels can be adjusted then system will automatically adjusted those number of labels in one row

Similarly if system shows more than one label when we require only one then we need to reduce the width of paper

e.g. **Width (w):** 50.00 mm  
**Height (h):** 25.00 mm

- Click on **Ok**





9. Click on **Next**

**Zebra TLP2844** [X]

**Dispense Mode**  
Allows you to configure the action performed by the printer after printing each label

---

Select the action you want to see performed.

None [v]

---

< Back   Next >   Cancel

**Zebra TLP2844** [X]

**Media Type**  
Used to specify whether a ribbon is being used during the print process or not

---

Select the Media Type that you have installed.

Thermal Transfer [v]

---

< Back   Next >   Cancel



10. Click on **Options**

Zebra TLP2844



## Completing the Configuration Assistant Wizard

You have successfully completed the Configuration Assistant Wizard.

Click Finish to complete configuration process!

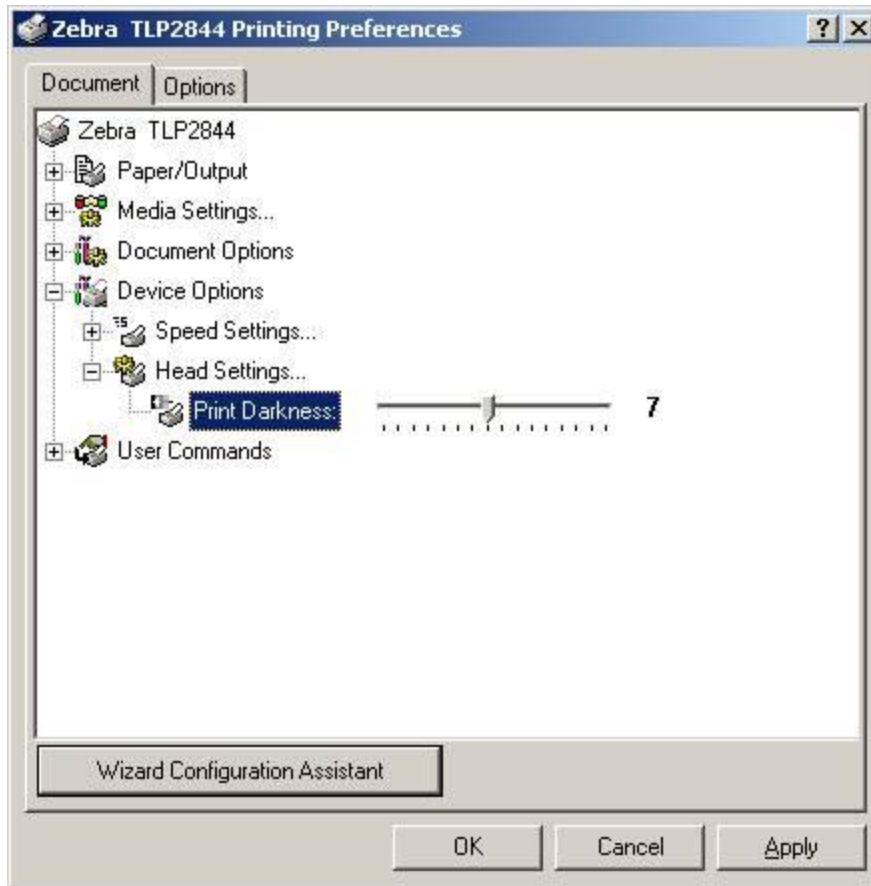
< Back

Finish

Cancel



11. Here enter the gap which is between two labels



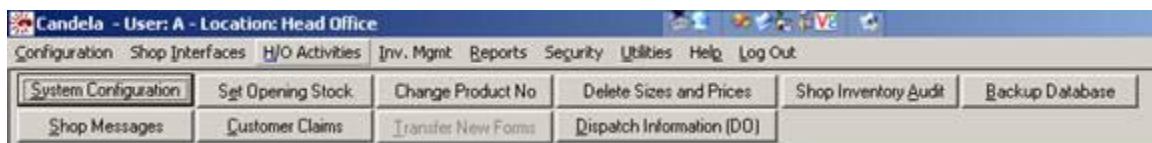
12. Click on **Apply**

1.

1. Set the **Print Darkness** of printer that is required. This darkness is adjusted if barcode is not Read properly through scanners.

## Settings in Candela

1. Click on **Head Office Activities**



2. Click on **System Configuration**

**System Configurations**

Product      Sales & Purchase      Invoice

Member Club      **Product Barcode**      Company Info

Select One of the Barcode Options

Product Code      Price      Width: 2.2"      Height: 1.1"      Sheet: 1 X 1



Product Name      Color      No of Barcode: 1

Product Attribute

**Set Active**

**Left Margin**

**Top Margin**

Sr.No	Barcode Name	Active	Left Margin	Top Margin
5	36/Sheet	No	1.70	0.40
6	30/Sheet with Company Nan	No	1.70	0.40
7	16/Sheet Without Price	No	1.70	0.40
8	16/Sheet With Code	No	1.70	0.40
9	Cognitive Labels	No	0.15	0.01
▶ 10	Zebra Labels	Yes	0.00	0.00
11	30/Sheet with Product Group	No	1.690	0.400

Print

Exit

Cancel

Delete

Update

Save

New

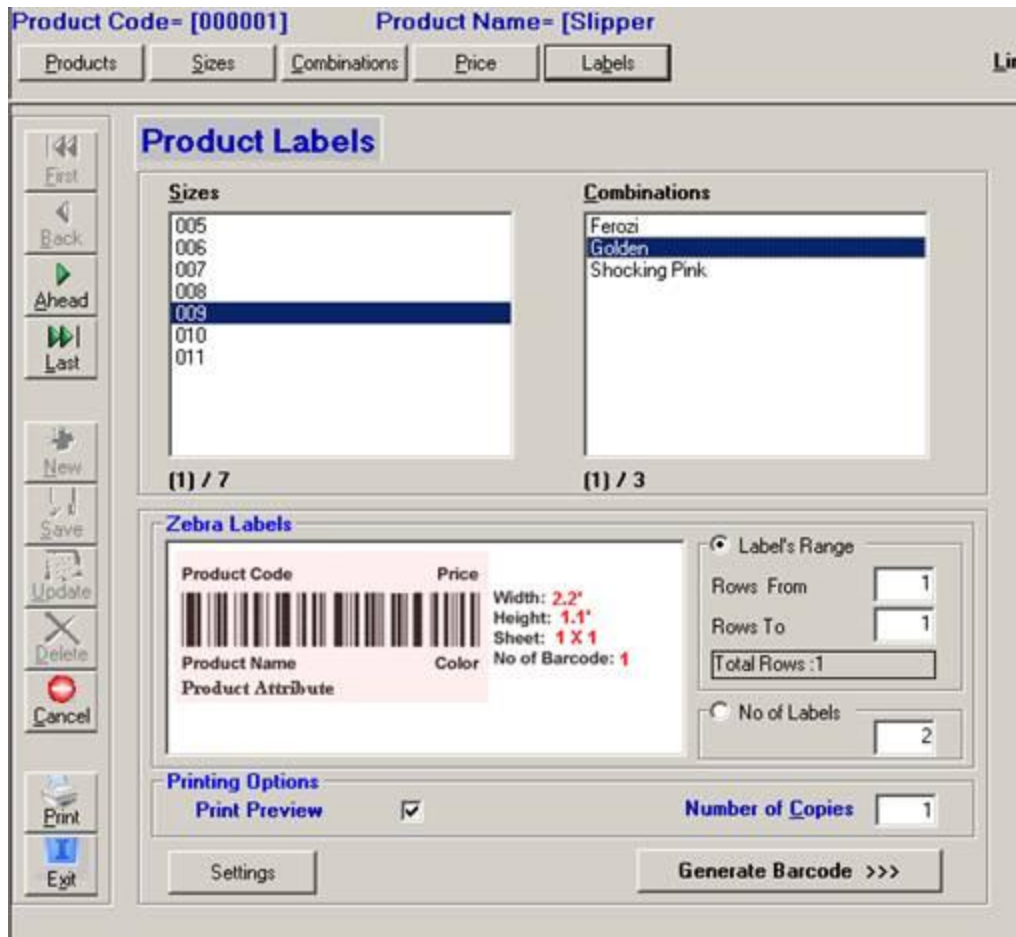
Ahead

Back

First

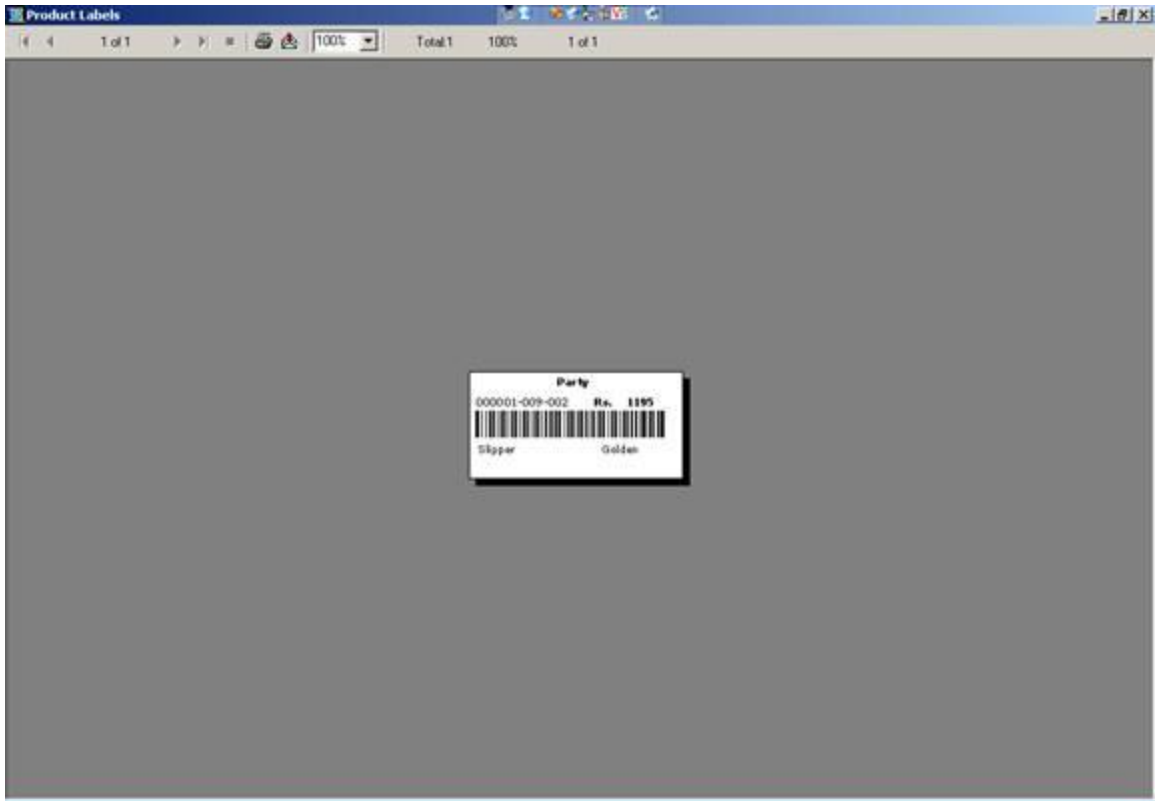
Last

3. Select the **Zebra Labels** and click on **Set Active** and then click on Save button
4. To test the barcode go to **Configurationà Products à Labels**



5. Click on **Generate Barcode >>>** If system shows more than one label while we need on one, then we need to go back to the paper size and make adjustment to width.





6. Click on **Print button** to take the printout