



LumenSoft Lightwave

Accounting System

Installation Guide v2.0

Step by Step Installation Guide



Table of Contents

Operating System..... 3

Installation of Lightwave Pre-requisites 3

Install LumenSoft Lightwave Accounting..... 4

Logging in to LumenSoft Lightwave Accounting for the first time..... 12

Step by Step Installation Guide



Operating System

LumenSoft Lightwave can be installed in Windows 2000 or Window XP operating system. Please check the latest service pack of the operating system for smooth working and installation.

Installation of Lightwave Pre-requisites

Before installing LumenSoft Lightwave Accounting all the pre-requisite software should be installed on the computer. Following software are required for running Lightwave Accounting:

- *. Net Framework 2.0*
- *Crystal Reports for .Net Framework 2.0*
- *Windows Installer 3.1*
- *SQL Server 2005 Express Edition*

***Please Note** that all these software are installed automatically by Lightwave Installer. If any of above software is already installed then Lightwave Installer skips that installation and moves to the next step.*

Step by Step Installation Guide



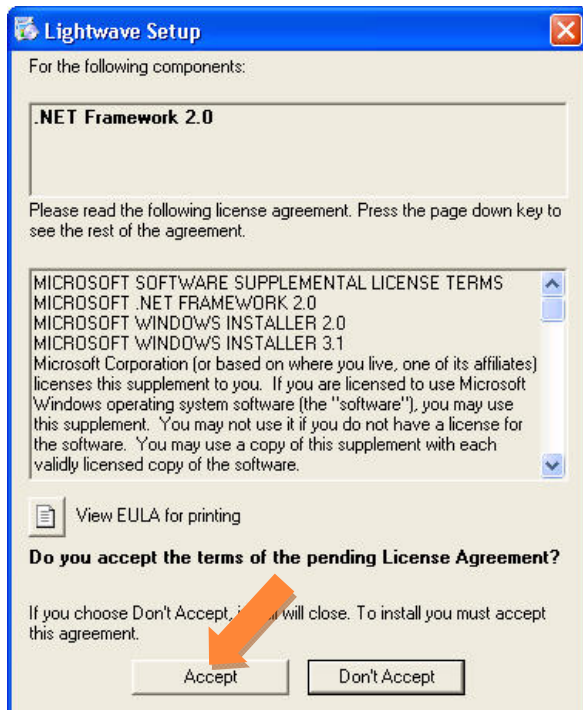
Install LumenSoft Lightwave Accounting

Go to directory where you saved the downloaded LumenSoft Lightwave Accounting Setup file.

Double click on the Setup.exe file. This will start the installation of Lightwave.

Note: Screen in Step1 to Step6 will only appear if the Pre-Requisite software are not installed on your computer. If these software are already present on your computer then you will not see the screens in Step1 to Step6

Step 1: If .Net framework 2.0 is not installed on your computer then system will give you the following message:

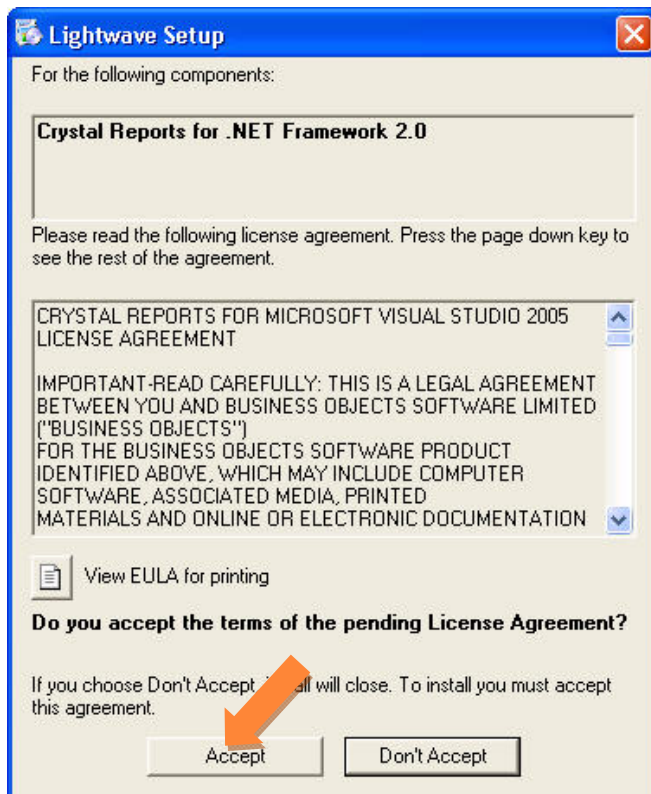


Press "Accept" on this screen and installer will continue with installation. If Lightwave Installer detects this software on your computer then you will not see this screen

Step by Step Installation Guide



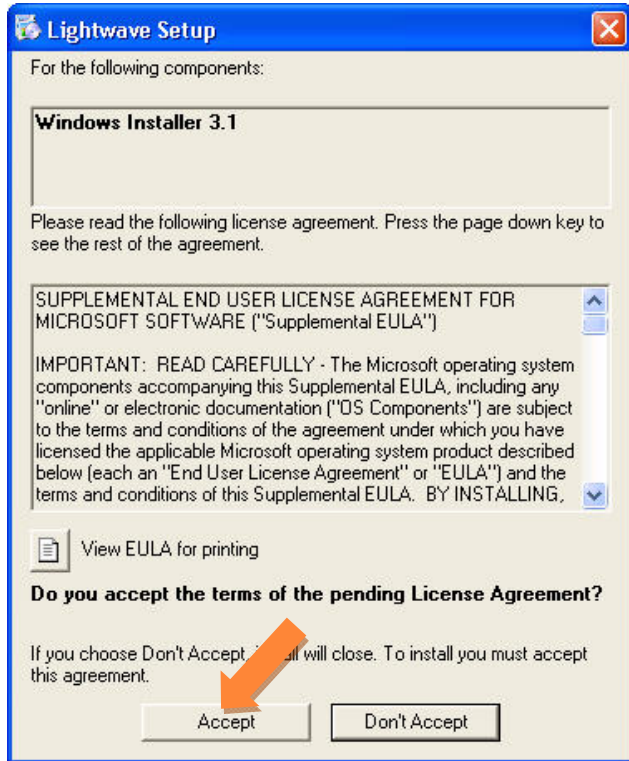
Step 2: If Crystal Reports for .Net Framework 2.0 is not installed on your computer then system will give you the following message:



Press **“Accept”** on this screen and installer will continue with installation. If Lightwave Installer detects this software on your computer then you will not see this screen

Step 3: If Windows Installer 3.1 is not installed on your computer then system will give you the following message:

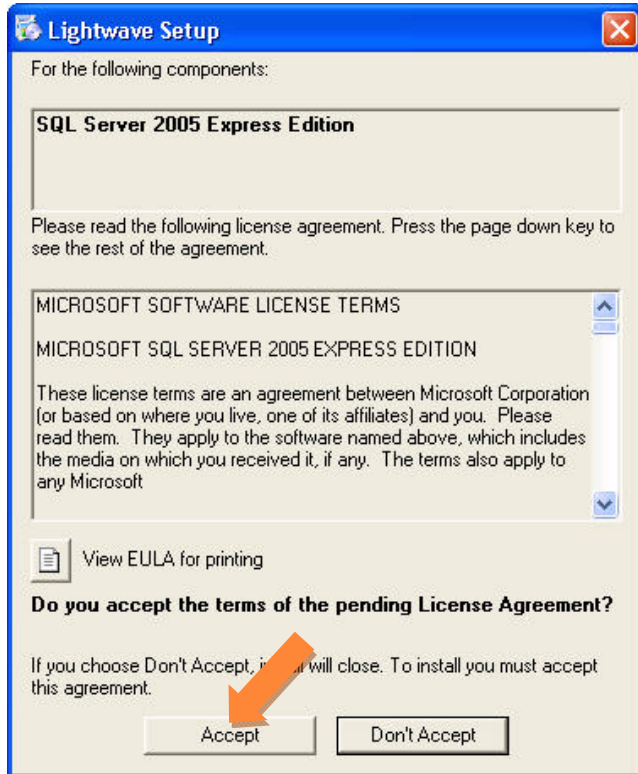
Step by Step Installation Guide



Press **“Accept”** on this screen and installer will continue with installation. If Lightwave Installer detects this software on your computer then you will not see this screen

Step 4: If SQL Server 2005 Express Edition is not installed on your computer then system will give you the following message:

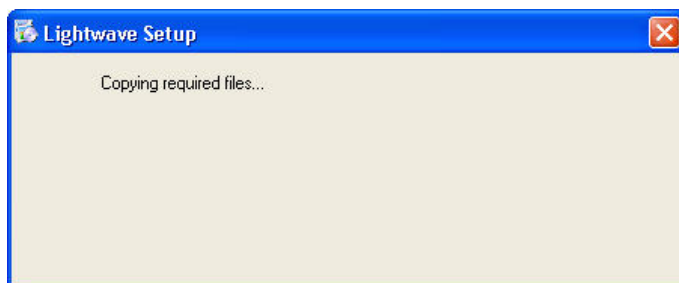
Step by Step Installation Guide



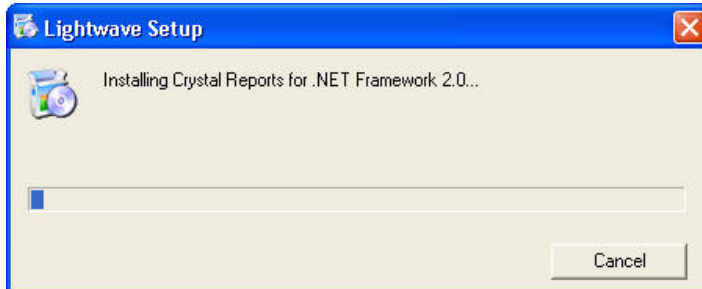
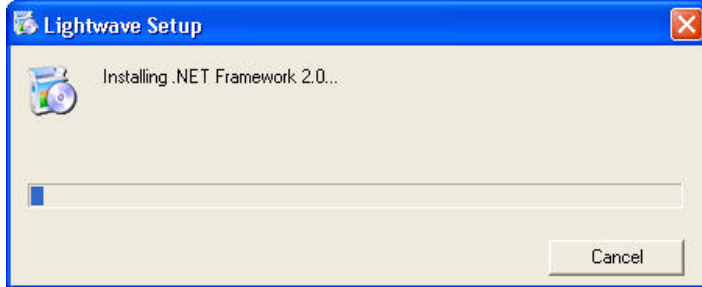
Press **"Accept"** on this screen and installer will continue with installation. If Lightwave Installer detects this software on your computer then you will not see this screen

Step 5: Now Your Computer will start Installations of above software. You don't have to do anything. Just let the installer do its job

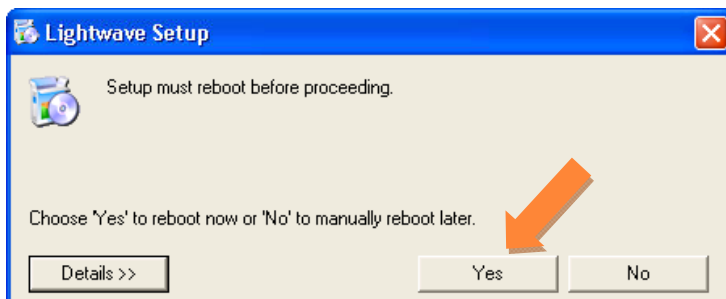
(The below screens will only appear if system showed you the license agreement for these software in step 1 to step 4. Otherwise the system will continue with next step.)



Step by Step Installation Guide

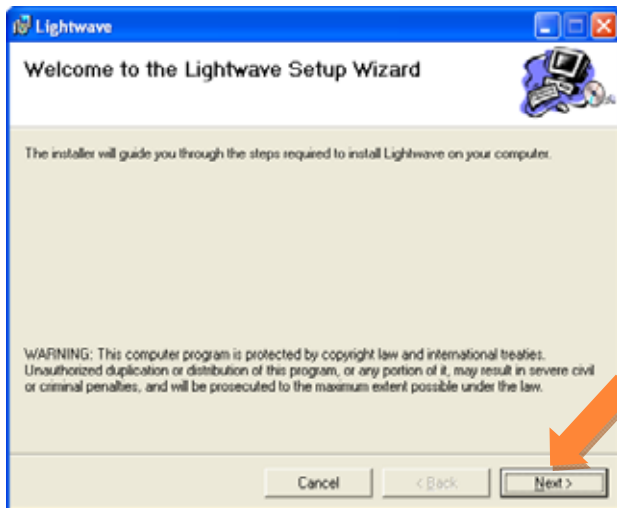
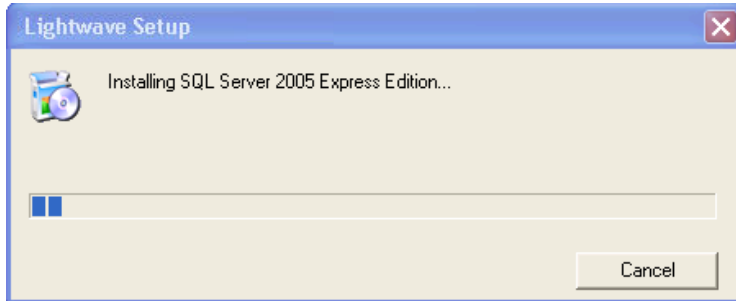


In case of Windows Installer 3.1 installation the system will ask you to reboot the system and show you the message given below:

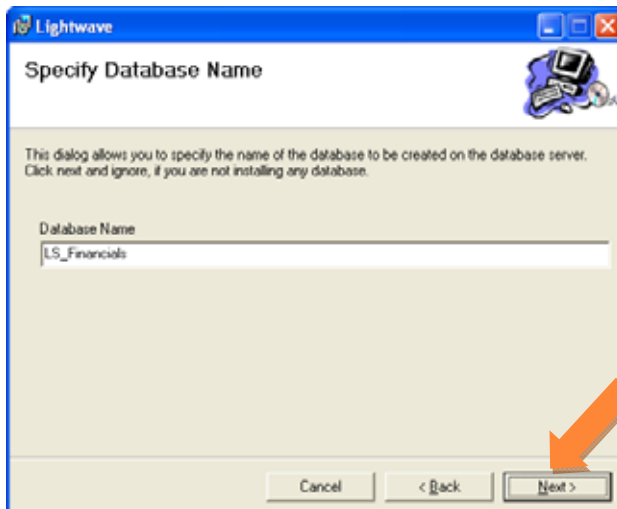


Step 6: *If you see the above message then press "Yes". The system will reboot. After reboot the system will automatically continue with the installation process*

Step by Step Installation Guide

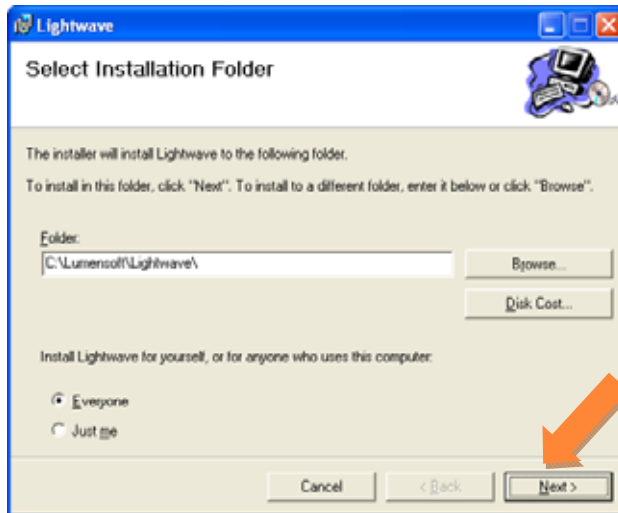


Step 7: This screen shows that Lightwave Accounting software installation has started. Just click "Next"

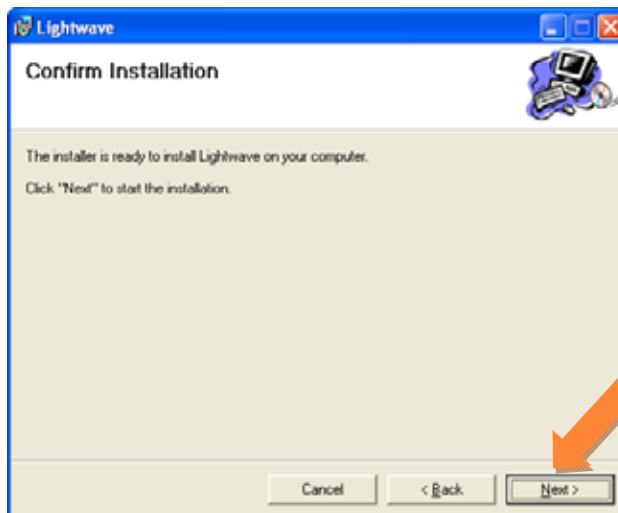


Step 8: Now the system asks for the name of the database. You can just press "Next" to continue with installation

Step by Step Installation Guide

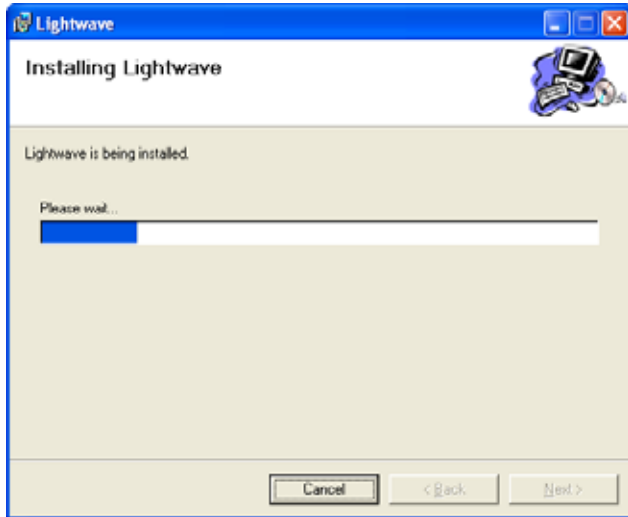


Step 9: Now the system asks the location where Lightwave is going to be installed. You can accept the suggested location or change the installation folder (Although you can keep the suggested location, Its recommended that you install on "D:\ " drive instead of "C:\ "). Then press "Next" to continue with installation

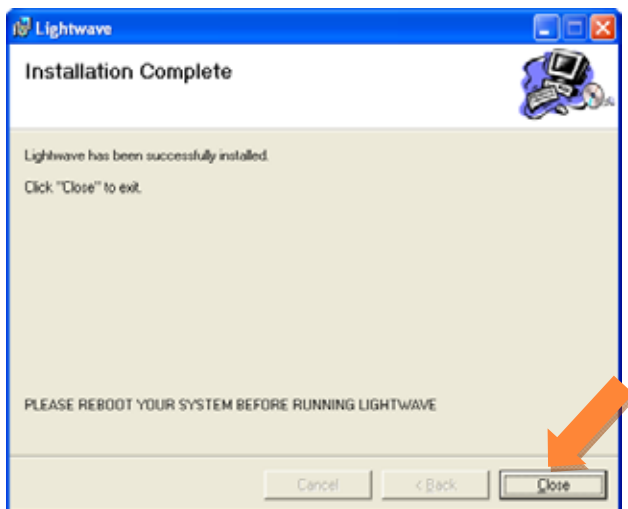


Step 10: Now the system has done all the background work and is ready to install Lightwave. Just press "Next" to continue with installation

Step by Step Installation Guide




Step 11: This step may take few minutes so wait patiently and let the installer finish its job



Step 12: Now Lightwave installation is complete.

Please **Reboot** your system and run Lightwave. You can run Lightwave from the installation folder

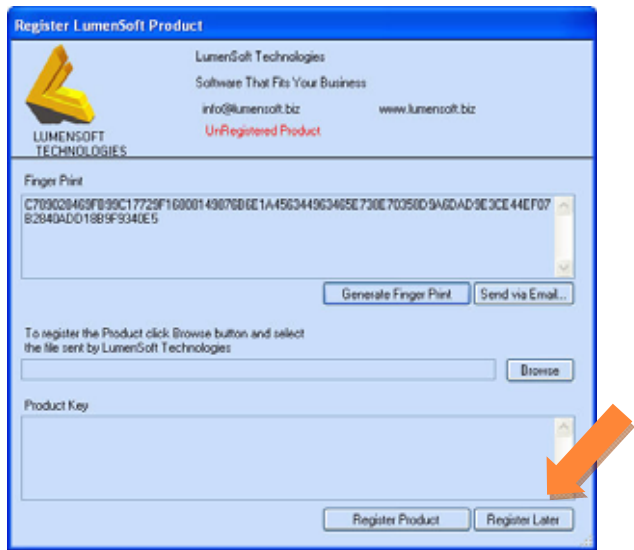
OR you can click on the Lightwave shortcut  created by system on DeskTop

Step by Step Installation Guide



Logging in to LumenSoft Lightwave Accounting for the first time

If you are not a registered user then by default you are a “trial version” or “demo version” user. When you run the software (by clicking the Lightwave icon) you will see the following screen displaying message that this is “**Unregistered Product**”.



You can load LumenSoft Lightwave Accounting application by clicking button and use LumenSoft Lightwave Accounting' full functionality as a trial or demo user.

When you click on “Register Later” Lightwave Login Screen appears as below:

Step by Step Installation Guide



Here enter following data:

User ID: **demo**

Password: **demo**

Click  or press *ENTER* from your keyboard.